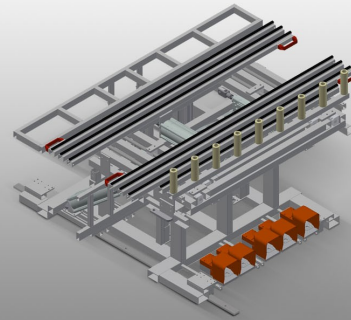




### *RMT1400*

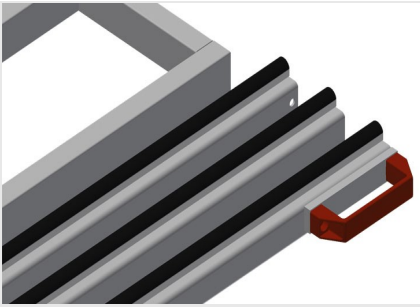
#### TILTING TABLES



- Stable steel construction
- Tilting assembly table with draw-in unit
- Basic dimensions 1,400 x 2,000 mm, when pulled out 2,000 x 2,800 mm
- Pull-out work platform consisting of two supporting beams, clad with brush strip
- Minimum size of work platform 2,000 x 1,000 mm
- Maximum size of work platform 2,800 x 2,000 mm
- Two supporting beams form a frame, the height of which can be adjusted pneumatically and continuously from 1,000 to 2,000 mm
- Lifting and tilting unit with foot valve
- Fixed roller conveyor with lifting unit, 100 mm
- Lifting unit for transferring / receiving from the roller conveyor
- Roller conveyor open at front for drawing in to transfer roller conveyor
- Mobility unit with flanged rollers and pneumatic fixing brake with operation from side

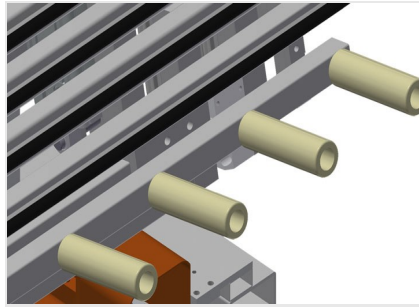
#### **Optional**

- Table supporting surface with felt profile strip for RMT 1400
- Auxiliary clamp with hand valve



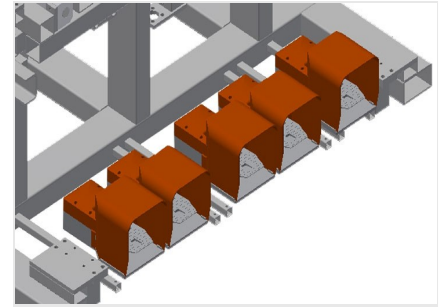
### Supporting surface

Table supporting surface with brush strips



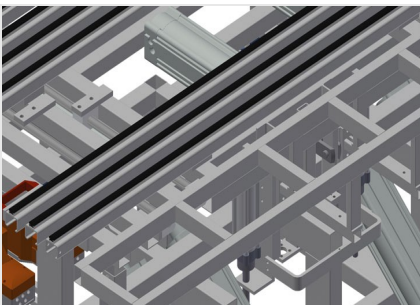
### Roller support

Roller conveyor open at front for drawing in to transfer roller conveyor. Fixed roller conveyor with lifting unit, 100 mm Lifting unit for transferring / receiving from the roller conveyor.



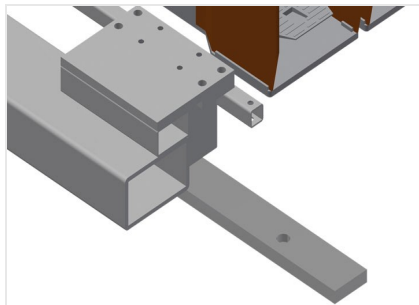
### Foot switch

Control via foot valve. Lifting and tilting unit with foot valve



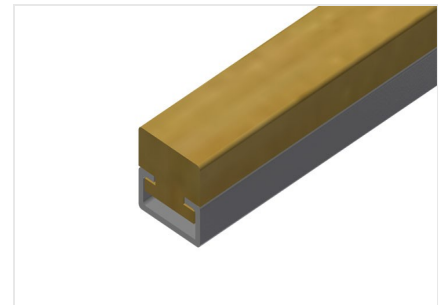
### Worktable

Height of support table adjustable to 230 mm below the work surface. Depth of support table 250 mm, length 2,000 mm



### Mobility unit

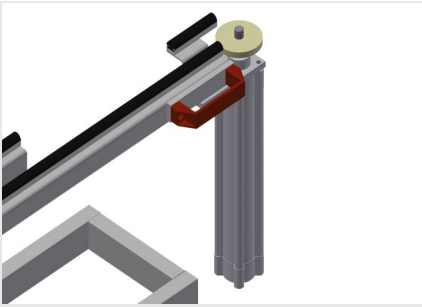
Mobility unit with flanged rollers and pneumatic fixing brake with operation from both sides



### Felt strip

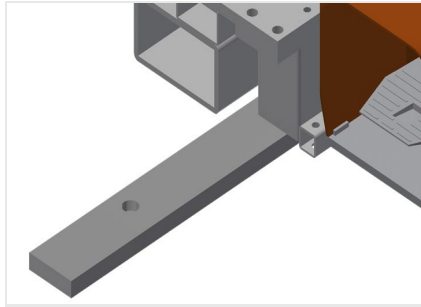
Table supporting surface with felt profile strip for RMT 1400





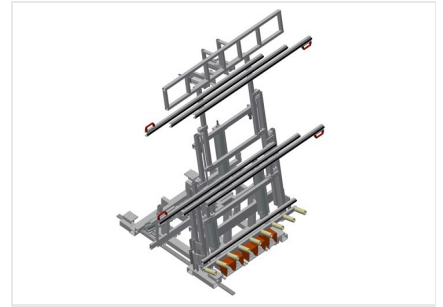
### Auxiliary clamp

Auxiliary clamp with hand valve for RMT 1400. Auxiliary clamps provide extra security when machining.



### Rail

Rails, 2.0 m, left and right



### Tilting assembly table with draw-in unit

Tilting assembly table with draw-in unit for mounting prefabricated roller shutter boxes onto window elements





### RMT 1400 / TILTING TABLES

---

- Working height 950 mm
- Roller conveyor length 1,600 mm
- Roller diameter 50 mm
- Roller length 150 mm
- Tilt of supporting surface 8°
- Depth of support table 200 mm
- Length of support table 2,000 mm
- Weight 450 kg
- Load 300 kg
- Length 2,000 mm
- Width 1,620 mm