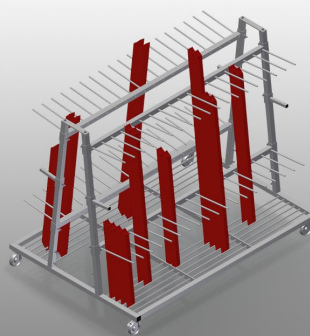


## **PWS4000**

### **Profile transport trolleys**

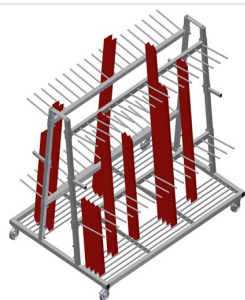


Profile trolley for vertical storage and transportation of profiles

- Stable steel construction
- Vertical profile transportation
- Profile trolley can be loaded on both sides
- 18 compartments per side
- Easy loading and unloading
- Sufficient for 120 – 160 profile bars
- Compartment dividers height is adjustable
- Supporting surface with bar grid floor
- Four castors, two of which have a fixing brake

#### **Options**

- Plastic protector for PWS 4000



### Profile transport trolley PWS 4000



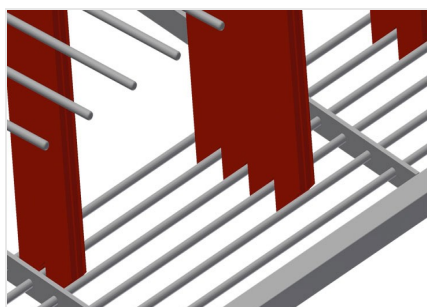
### Easy loading and unloading

Profile trolley with loading on two sides



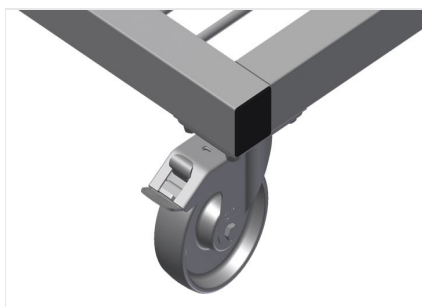
### Compartment dividers

Compartment divider height is adjustable,  
Compartment width 100 mm, Compartment  
depth 400 mm



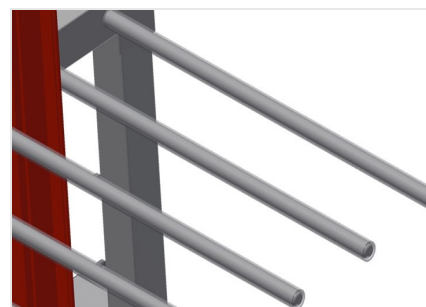
### Supporting surface

Supporting surface with bar grid floor



### Casters

Four casters, two of which have a fixing  
brake, provide a high degree of mobility  
and easy, safe handling



### Plastic protector

All supporting surfaces have a non-slip PVC  
cladding which protects surfaces from  
damage during storage



### **PWS 4000** / PROFILE TRANSPORT TROLLEYS

---

- Length 2,230 mm
- Width 1,560 mm
- Height 1,850 mm
- Four compartment dividers
- 36 compartments
- Roller diameter 125 mm
- Compartment width 100 mm
- Compartment depth 400 mm
- Unit height 1,620 mm
- Weight 200 kg
- Load 600 kg