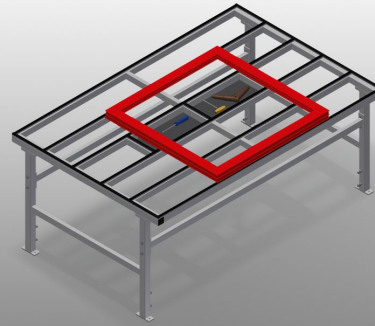




MST2000

Horizontal assembly
tables

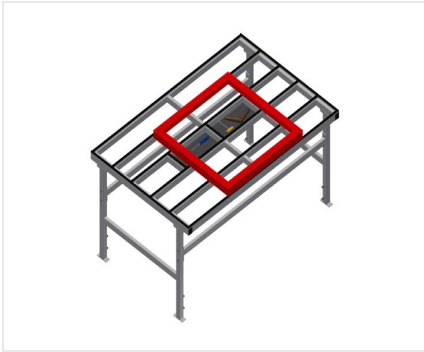


Assembly table expandable for all work tasks on frames and sashes

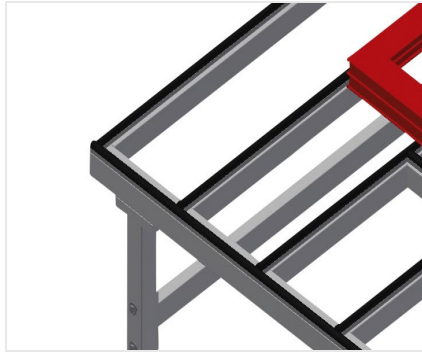
- Stable steel construction
- Assembly table for all work tasks on frames and sashes
- Horizontal frame transportation
- Storage tray for setting down tools and accessories
- Adjustable height
- Table supporting surface with plastic slide bars
- Simple installation with a modular system design

Options

- Also available with brush strips on request
- Also available with felt strips on request (for wooden profiles)
- Also available with rubber strips on request (for aluminium profiles)
- 4-fold compressed air supply

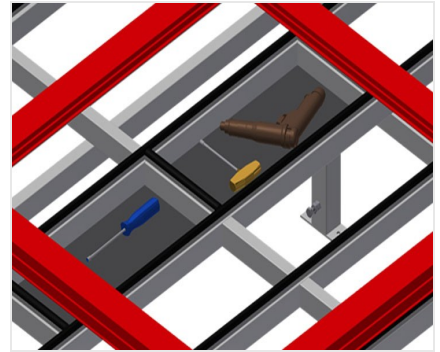


Sliding table MST 2000



Supporting surfaces

Supporting surfaces with plastic slide bars



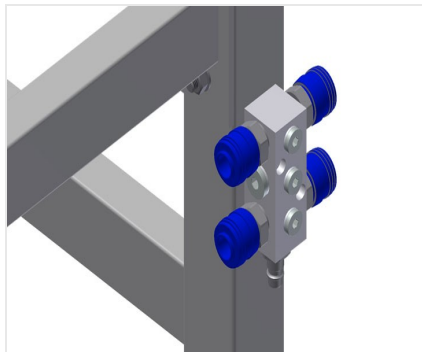
Storage tray

Storage tray for setting down tools and accessories



Height adjustment

Adjustable height; working height can be set to 850 - 1,000 mm by means of adjustable feet



4-fold compressed air connection

4-fold compressed air connection for connecting compressed-air tools



Castors, cmpl.

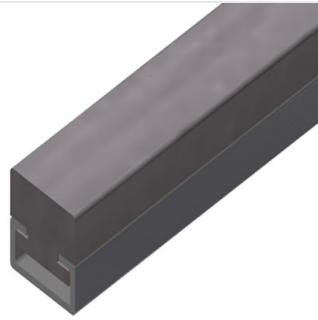
Two casters with brake and two fixed rollers provide mobility in all directions





Brush strip

Supporting surfaces with brush strip



Felt strip

Supporting surfaces with felt profile strip



Rubber strips

Supporting surfaces with rubber-knob profile





MST 2000 / HORIZONTAL ASSEMBLY TABLES

- Length 2,000 mm
- Height 850 - 1,000 mm
- Width 1,300 mm
- Weight 90 kg