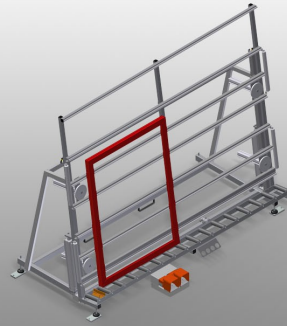




MS3000

ASSEMBLY STANDS



Assembly table for vertical assembly

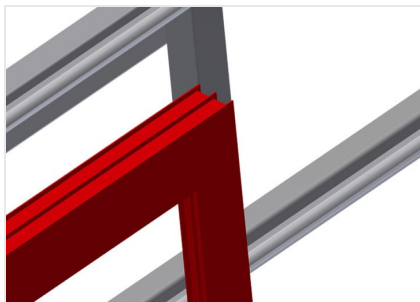
- Stable steel construction
- Ideal for vertical assembly
- Suitable for lines
- Infinitely variable intermediate positions for ergonomic working
- Height adjustment by means of pneumatic cylinder
- Roller support with steel rollers
- Table supporting surface with plastic slide bars
- Two horizontally adjustable profile clamps
- 4-fold compressed air supply

Options

- Pull-out profile support for MS 3000
- Positionable profile clamps
- Holder plate for screw driving unit
- Mobility unit
- Rail
- End stop
- Profile protectors for support rollers

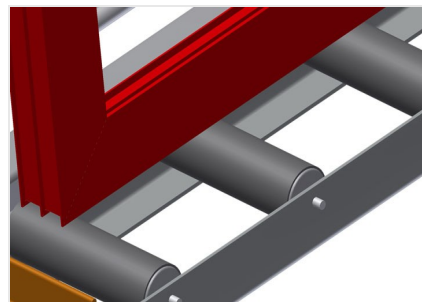


Assembly stand MS 3000



Supporting surfaces

Supporting surfaces with plastic slide bars



Roller support

Lower roller conveyor with support roller, L = 200 mm



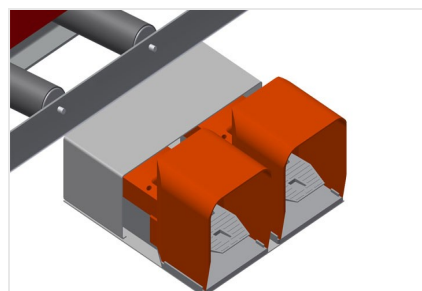
Clamps

Two material clamps at the side fix the profile while working, profile clamping height, max. 200 mm



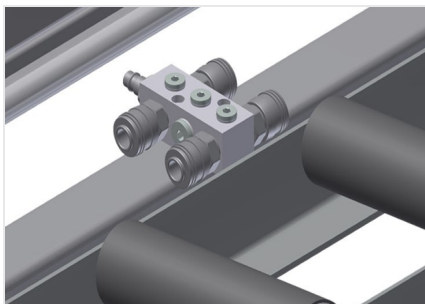
Height adjustment

Adjustable height; working height can be set by means of adjustable feet



Foot switch

Control via foot valve. Height adjustable pneumatically by 500 mm in the vertical position, clamping is pneumatic



4-fold compressed air connection



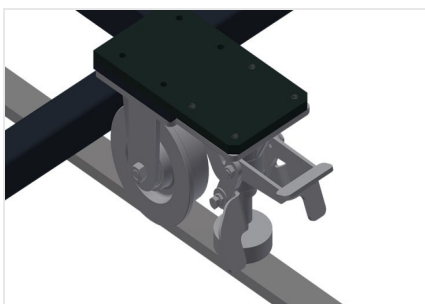
Lead-in rollers

Protective rollers for beginning or end of roller conveyor



Pull-out profile support

The table support can be pulled out at the top for MS 3000 and MS 4000 by 800 mm and 500 mm to accommodate high frames



Mobility unit

Mobility unit for KT/KTH/MS/VE, with flanged rollers and fixing brake



Rails

Rails, 2.0 m, left and right respectively



MS 3000 / ASSEMBLY STANDS

- Length 3,110 mm
- Width 1,200 mm
- Vertical height 2,050 mm
- Pneum. height adjustment 500 mm
- Roller conveyor width 200 mm
- Weight 330 kg
- Load 300 kg
- Compressed air supply 7 bar
- Air consumption approx. 35 l/min.