

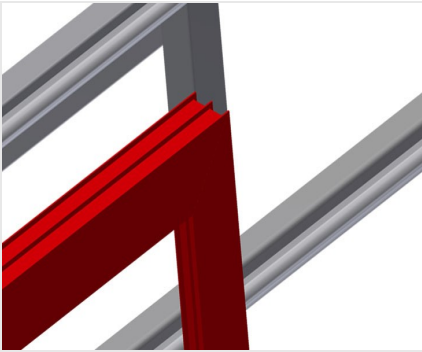


**MS**

Assembly stands

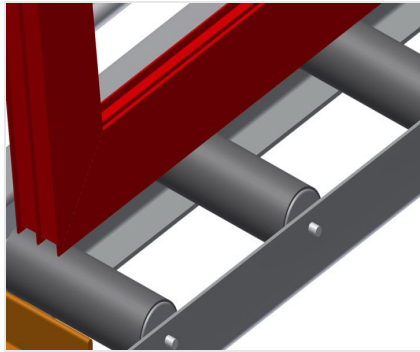


Assembly table for vertical assembly. Stable steel construction. Ideal for vertical assembly. Suitable for lines. Infinitely variable intermediate positions for ergonomic working. Height adjustment by means of pneumatic cylinder. Roller support with steel rollers. Table supporting surface with plastic slide bars. Two horizontally adjustable profile clamps. 4-fold compressed air supply.



### Supporting surfaces

Supporting surfaces with plastic slide bars



### Roller support

Lower roller conveyor with support roller, L = 200 mm



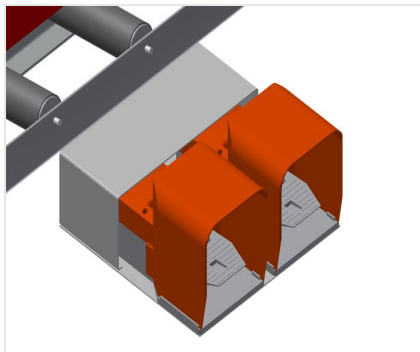
### Clamps

Two material clamps at the side fix the profile while working, profile clamping height, max. 200 mm



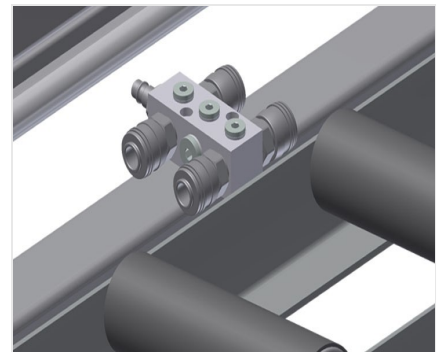
### Height adjustment

Adjustable height; working height can be set by means of adjustable feet



### Foot switch

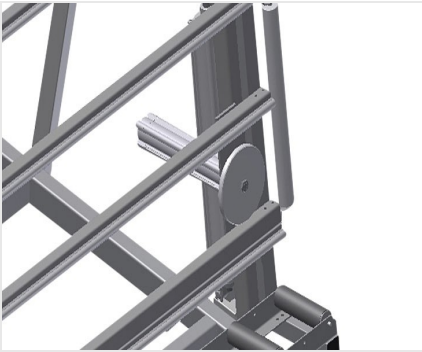
Control via foot valve. Height adjustable pneumatically by 500 mm in the vertical position, clamping is pneumatic



### 4-fold compressed air connection

4-fold connection for compressed-air tools





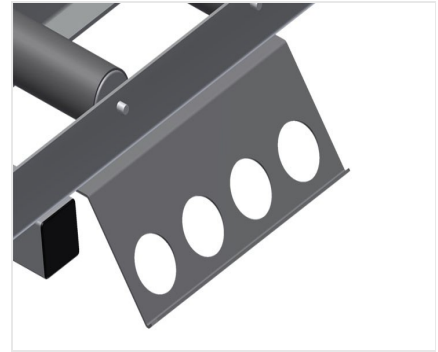
### Lead-in rollers

Protective rollers for beginning or end of roller conveyor



### Pull-out profile support

The table support can be pulled out at the top for MS 3000 and MS 4000 by 800 mm and 500 mm to accommodate high frames



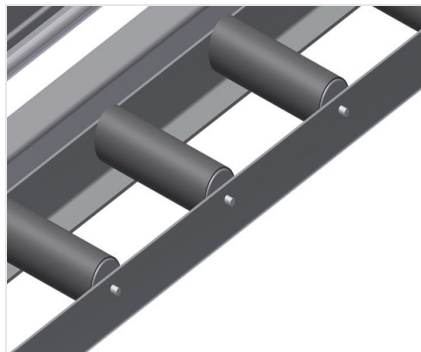
### Holder plate for screw driving unit

Tool rack for pneumatic tools



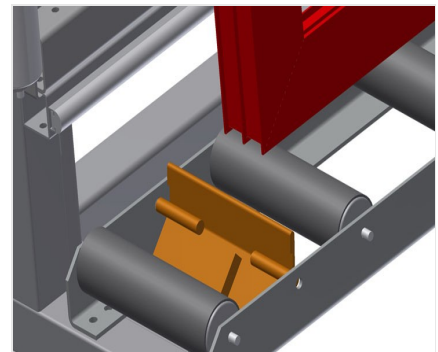
### Positionable profile clamps

Auxiliary clamps provide extra security when working



### Profile protectors for support rollers

Profile protectors for support rollers, 200 mm (Alum./16 x and Alum./21 x), roller conveyor with protective tubing over the rollers to protect the window element during infeed and outfeed.



### End stop

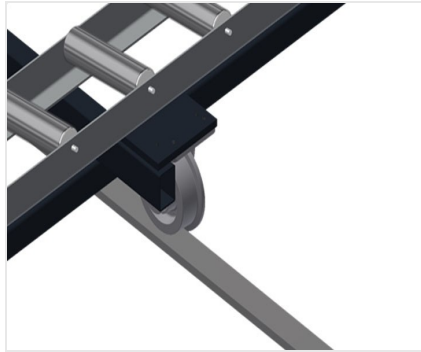
End stop Rb = 200 mm





### Mobility unit

Mobility unit for KT/KTH/MS/VE. Mobility unit with flanged rollers and fixing brake



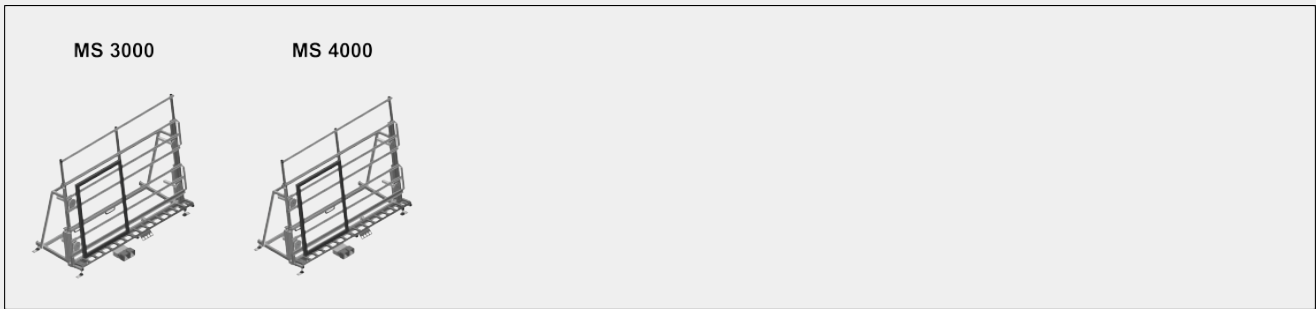
### Rails

Rails, 2.0 m, left and right





### MODELS



### DIMENSION AND WEIGHT

#### MS 3000 / MS 4000

Length (mm)	<input type="radio"/>
Width (mm)	<input type="radio"/>
Vertical height (mm)	<input type="radio"/>
Roller conveyor width (mm)	<input type="radio"/>
Weight (kg)	<input type="radio"/>

### SUPPORTING SURFACE

Pneumatic height adjustment (mm)	<input type="radio"/>
Pneumatic vertical height adjustment	<input checked="" type="radio"/>
Pull-out profile support	<input type="radio"/>
Profile protectors for support rollers	<input type="radio"/>
Load capacity (kg)	<input type="radio"/>



### CHARACTERISTICS

Horizontally adjustable profile clamps	<input type="radio"/>
Positionable profile clamps	<input type="radio"/>
Holder plate L=290 mm	<input type="radio"/>
End stop	<input type="radio"/>
4-fold compressed air supply	<input checked="" type="radio"/>
Mobility unit	<input type="radio"/>
Rail 2,0 m left and right	<input type="radio"/>
Operating air pressure (bar)	<input type="radio"/>
Air consumption approx. (l/min)	<input type="radio"/>

Included ● Available ○