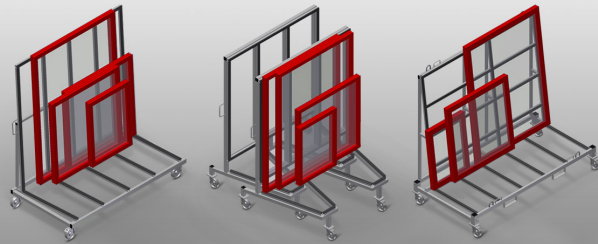




KW

Commissioning trolleys



Commissioning trolley for in-house transportation of window elements. Stable steel construction. Profile supports with rubber surface. Four swivel castors, two of which with locking stop.

KW 2: Openings for forklift transportation. Four hooks for crane transportation. Four lashing strap attachment points. Castors can be removed for increased stability of the commissioning trolley in a lorry.

KW 3: Can be nested when not loaded - a space-saving feature.

KW 4: Openings for forklift transportation. Four hooks for crane transportation. Four lashing strap attachment points. Castors can be removed for increased stability of the commissioning trolley.



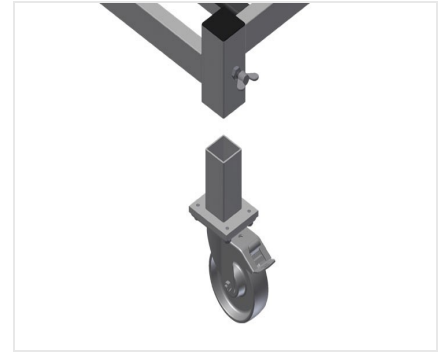
Casters KW 1 / KW 3

Four casters, two of which have a fixing brake, provide a high degree of mobility and easy, safe handling



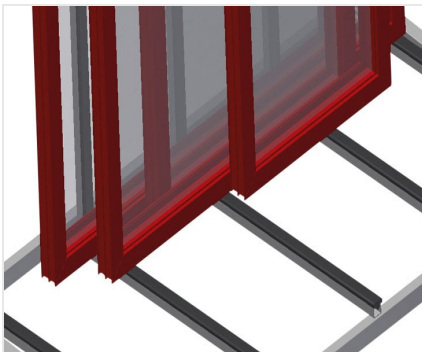
Removable casters KW 2

Casters can be removed for increased stability of the commissioning trolley in a lorry. Four casters, two of which have a fixing brake, provide a high degree of mobility and easy, safe handling



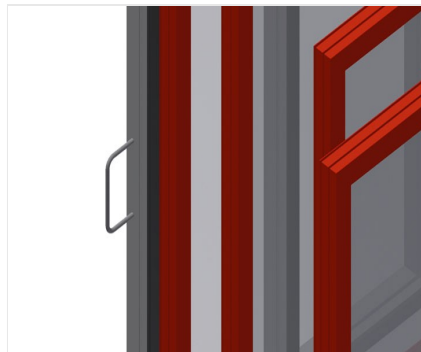
Removable casters KW 4

Casters can be removed for increased stability of the commissioning trolley on the floor. Four casters, two of which have a fixing brake, provide a high degree of mobility and easy, safe handling



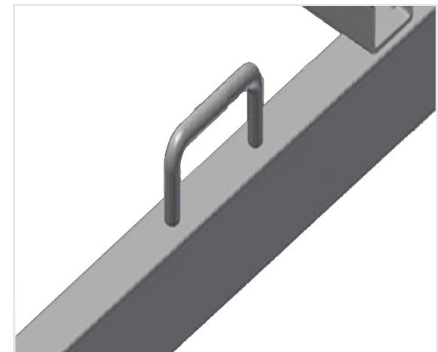
Supports with rubber strip

Supporting surfaces equipped with rubber strips to protect profiles from damage



Transport handles KW 1 / KW 3

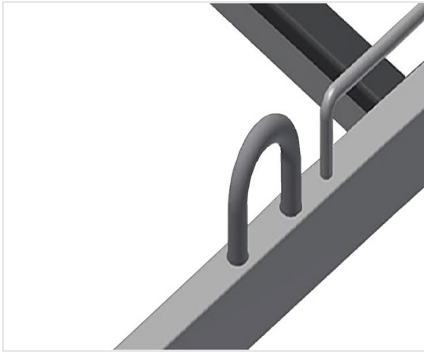
Transport handle on both sides for mobility



Lashing strap attachment points KW 2 / KW 4

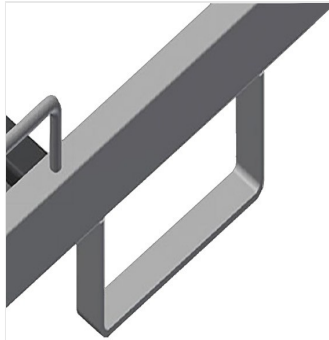
With four lashing strap attachment points





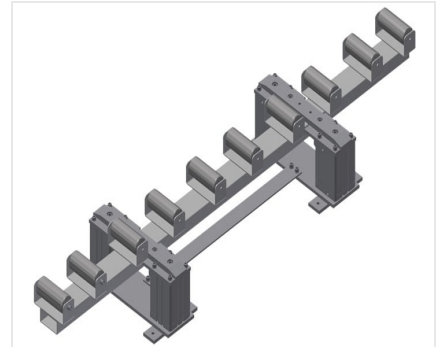
**Crane attachment points
KW 2 / KW 4**

Equipped with four crane attachment points



**Forklift openings
KW 2 / KW 4**

Equipped with four forklift openings



Lifting station KW 4

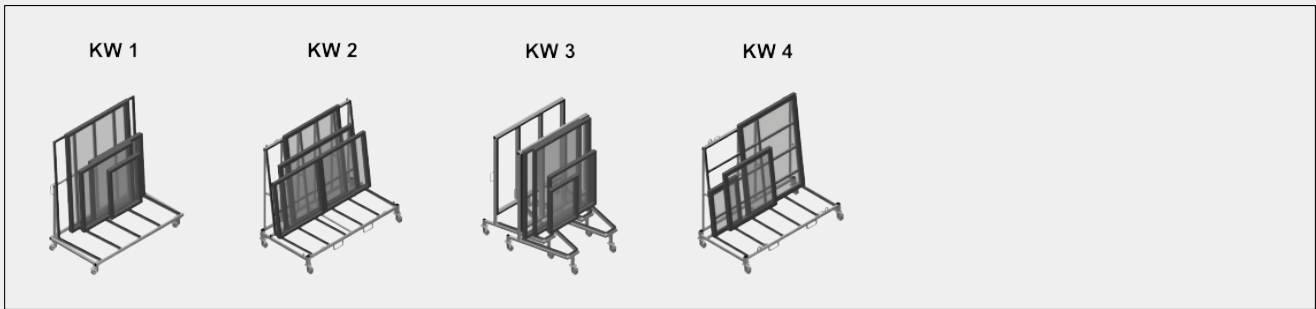
HBR 1600 Lifting station for the transfer of heavy windows to the transport trolley KW 4





KW / COMMISSIONING TROLLEYS

MODELS



DIMENSION AND WEIGHT

KW 1 / KW 2 / KW 3 / KW 4

Length (mm)	<input type="text"/>
Width (mm)	<input type="text"/>
Height (mm)	<input type="text"/>
Weight (kg)	<input type="text"/>

STORAGE CAPACITY

KW 1 / KW2 / KW 3 / KW 4

Load capacity (kg)	<input type="text"/>
--------------------	----------------------

KW 2

Effective width (mm)	<input type="text"/>
Support height (mm)	<input type="text"/>



CHARACTERISTICS

KW 2 / KW 4

- Openings for forklift transportation
- Hooks for crane transportation
- Lashing strap attachment points

KW 2

- Trolley also for external transportation
- Castors can be removed for commissioning trolley in a lorry

KW 3

- Horizontally stackable when not loaded

KW 4

- Lifting station for the transfer of heavy windows

KW 1 / KW 2 / KW 3 / KW 4

- Swivel castors diameter (mm)
- Swivel castors
- Swivel castors with locking stop

Included Available