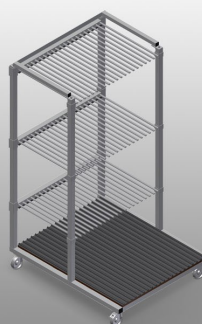


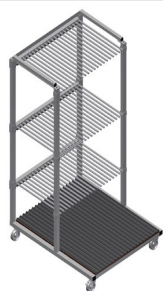


## **GFW1200**

Glass  
compartment/glazing  
bead trolleys



- Stable steel construction
- Ideal for sorting glass
- Hardwood supporting surface with felt
- Compartment dividers for 20 sheets of glass
- Compartment dividers height is adjustable
- Four castors, two of which have a fixing brake

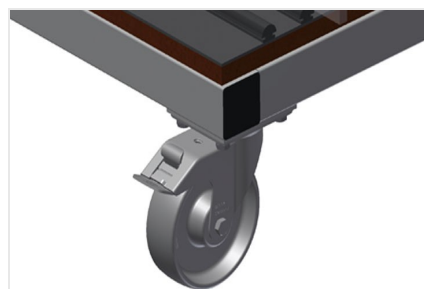


### Glass transport trolley GFW 1200



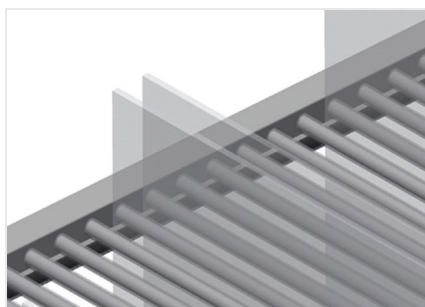
### Glass transport trolley GFW 1200

With glass panes



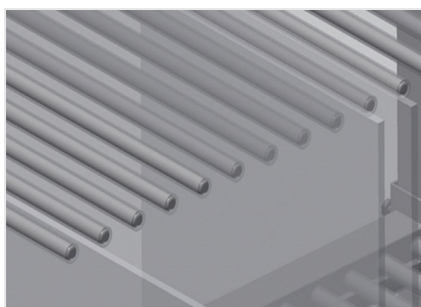
### Castors

Four casters, two of which have a fixing brake, provide a high degree of mobility and easy, safe handling



### Compartment divider with plastic protection

Compartment dividers height is adjustable. All supporting surfaces have a non-slip PVC cladding which protects sheets of glass from damage during storage



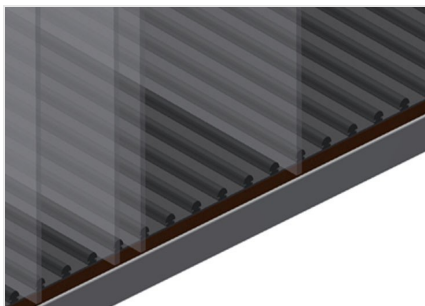
### Easy loading and unloading

Well-organised storage provides quick access



### Rear support with rubber strips

Rear supporting surfaces equipped with rubber strips protect sheets of glass from damage



### **Wooden supporting surface with felt**

Lower supporting surface covered with felt. Additional plastic strips on the floor



### **GFW 1200** / GLASS COMPARTMENT/GLAZING BEAD TROLLEYS

---

- Length 1,200 mm
- Width 1,400 mm
- Height 2,270 mm
- 20 compartments
- Clearance 30 mm
- Weight 210 kg
- Load 800 kg
- Roller diameter 125 mm